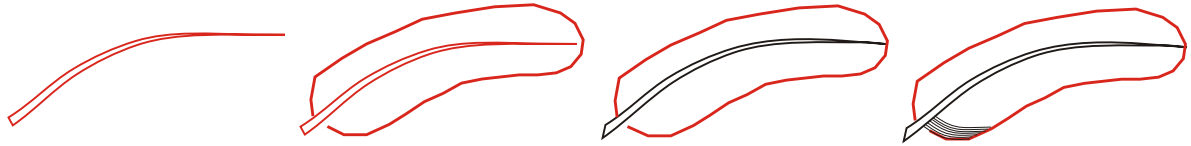


# WOODBURNING FEATHERS

Always pull the woodburner blade towards you. Keep your heat as low as possible..



Pencil the shaft first, a slight curve is nice

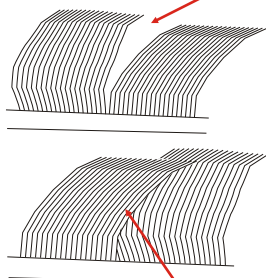
Pencil the outline

Woodburn the shaft

Woodburn barbs from left to right (if right-handed)

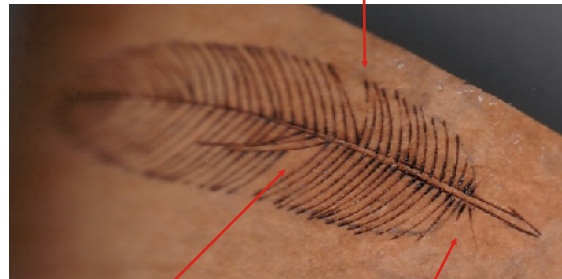
*Adding Realism:*

separate a few barbs with a triangle of air



overlap one or more barbs

a few unruly down feathers



DO NOT woodburn the (red) pencil line around the barbs!

Never let your blade block your view of the previous line. Right-handed: turn your gourd as you work so that you are always working from left to right.

Keep your tip clean of carbon or charred gourd bits as you work by brushing your blade over steel wool often while working. Lightly buffing your finished feather with steel wool will remove any carbon or burrs and smooth your feather.

Erase pencil lines when you finish your feather(s).

